

Certificate of Analysis

Grail Formula Health B.V.

Grail Formula Health
Hingenderstraat 39
6111 AB Sint Joost
Netherlands
Info@grailformula.com

Liquilabs s.r.o.

Inovační 122
252 41 Zlatníky-Hodkovice
Czechia
www.liquilabs.cz



[Verify Results Online](#)


Sample Identification

Sample Name CREATINE MONOHYDRATE 350 GR
Batch Number 19032026
Date Published 2026-04-22 13:45

Results for RAW-0006

Peptides	Result	Unit	Uncertainty	Acceptable Range
Creatine Monohydrate Assay Peptide Screening 0.1% TFA	> 99.8	%(m/m)		

Elemental Impurities	Result	Unit	Uncertainty	Acceptable Range
Arsenic Elemental Impurities screening USP (232) / Ph. Eur. 5.20 / 2.4.20	< 0.001	ppm		
Cadmium Elemental Impurities screening USP (232) / Ph. Eur. 5.20 / 2.4.20	< 0.001	ppm		
Quicksilver Elemental Impurities screening USP (232) / Ph. Eur. 5.20 / 2.4.20	< 0.001	ppm		
Lead Elemental Impurities screening USP (232) / Ph. Eur. 5.20 / 2.4.20	< 0.001	ppm		
Nickel Elemental Impurities screening USP (232) / Ph. Eur. 5.20 / 2.4.20	< 0.001	ppm		
Vanadium Elemental Impurities screening USP (232) / Ph. Eur. 5.20 / 2.4.20	< 0.001	ppm		
Cobalt Elemental Impurities screening USP (232) / Ph. Eur. 5.20 / 2.4.20	< 0.001	ppm		

	Method Specification	
Determination of content Creatine Monohydrate		
<i>Document number</i> CREA_001_2026	<i>Superseded document</i> -	<i>Number of pages</i> 2

1. Content Assesment

1.1. Instrumentation

Module	Name	Serial Number
System Controller	Shimadzu CBM-20A	L20235355693
Degassing Unit	Shimadzu DGU-14A	NA
Pump A	Shimadzu LC-20AD	L20104350216
Pump B	Shimadzu LC-20AD	L20104451348
Autosampler	Shimadzu SIL-10ADvp	C21054109114
Colum Thermostat	Shimadzu CTO-10ACvp	C21033770144
Detector	Shimadzu SPD-10ADvp	C20994233588

1.2. Chromatographic conditions

Chromatographic conditions	
Eluent A	0.1% Formic Acid in Water (HPLC, Gradient Grade)
Eluent B	0.1% Formic Acid in Acetonitrile (HPLC, Gradient Grade)
Flow rate	1.0 mL/min
Program	Gradient elution
Injection volume	10 µL
Colum Temperature	40°C
Column	Phenomenex Biozen Luna NH2, 150x3mm 3µm
Detection wavelenght	214nm

Gradient Program		
Time [min]	A [%]	B [%]
1	95	5
20.50	5	95
21.00	5	95
21.05	95	5
26	end	

1.3. Standard preparation

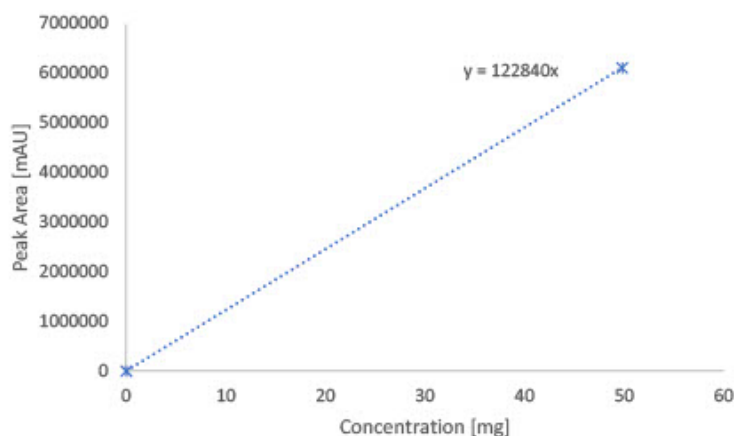
Approximately 50 mg of Creatine Monohydrate (CRM, Pure) was weighed and exact mass used was recorded. Whole amount of standard was quantitatively transferred to volumetric flask and dissolved using ultrasonic bath. After full dissolution, flask was filled up to mark by water (HPLC, Gradient Grade) and well mixed. 2 mL of prepared solution was filtered through 0.45 µm syringe filter into HPLC vial and placed for analysis.

1.4. Sample preparation

Approximately 50 mg of sample was weighed and exact mass of the sample used for analysis was recorded. Whole amount of sample was quantitatively transferred to volumetric flask and dissolved using ultrasonic bath. After full dissolution, flask was filled up to mark by water (HPLC, Gradient Grade) and well mixed. 2 mL of prepared solution was filtered through 0.45 µm syringe filter into HPLC vial and placed for analysis.

1.5. Calibration curve

Calibration curve detail	
Quantitative method	External Standard
Calibration Type	Linear
Number of calibration points	1
Force through Zero	Enabled
Weighting Method	None



1.6. Evaluation of percentual content

Percentual content was evaluated as:

$$\text{Content \%} = \frac{m}{m} = \left(\frac{A}{S * m} \right) * 100$$

Where:

A= Peak Area

S= Slope of calibration Curve

m= mass of sample weighed for analysis

Analysis Report

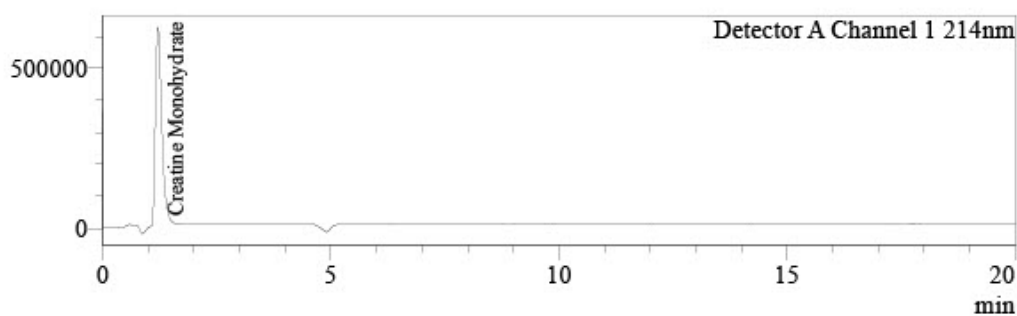


Sample Information

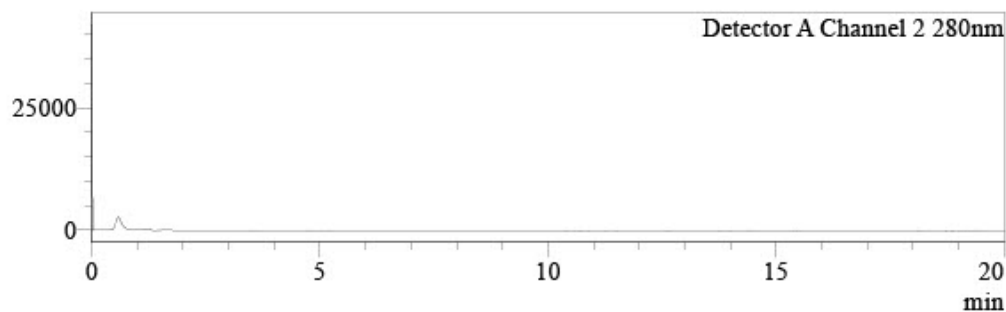
Injection Volume : 10
Data File : RAW-0006__007.lcd
Method File : HILIC.lcm
Date Acquired : 21.04.2026 16:36:12

Chromatogram

uAU



uAU



Peak Table

Detector A Channel 1 214nm

Peak#	Name	Ret. Time	Conc.	Unit	Area%
1	Creatine Monohydrate	1.209	100.063	% (m/m)	100.000
Total					100.000

Peak Table

Detector A Channel 2 280nm

Peak#	Name	Ret. Time	Conc.	Unit
Total				

Responsibles



Mr. Ján Galbavý
CEO

Analysis results relate only to the samples tested.

This document shall not be reproduced except in full, without the written approval of Liquilabs s.r.o.